

# MicroCT analysis applications

By Prof Anton du Plessis

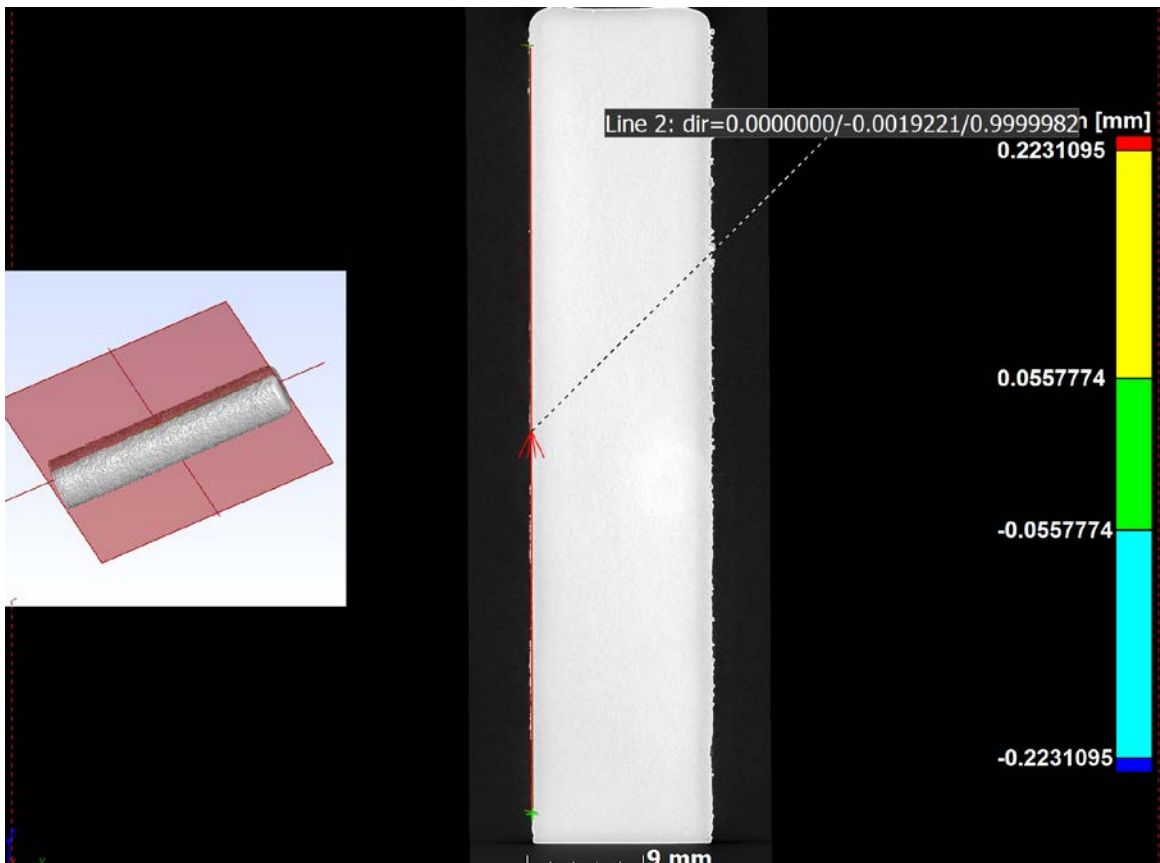
## Introduction

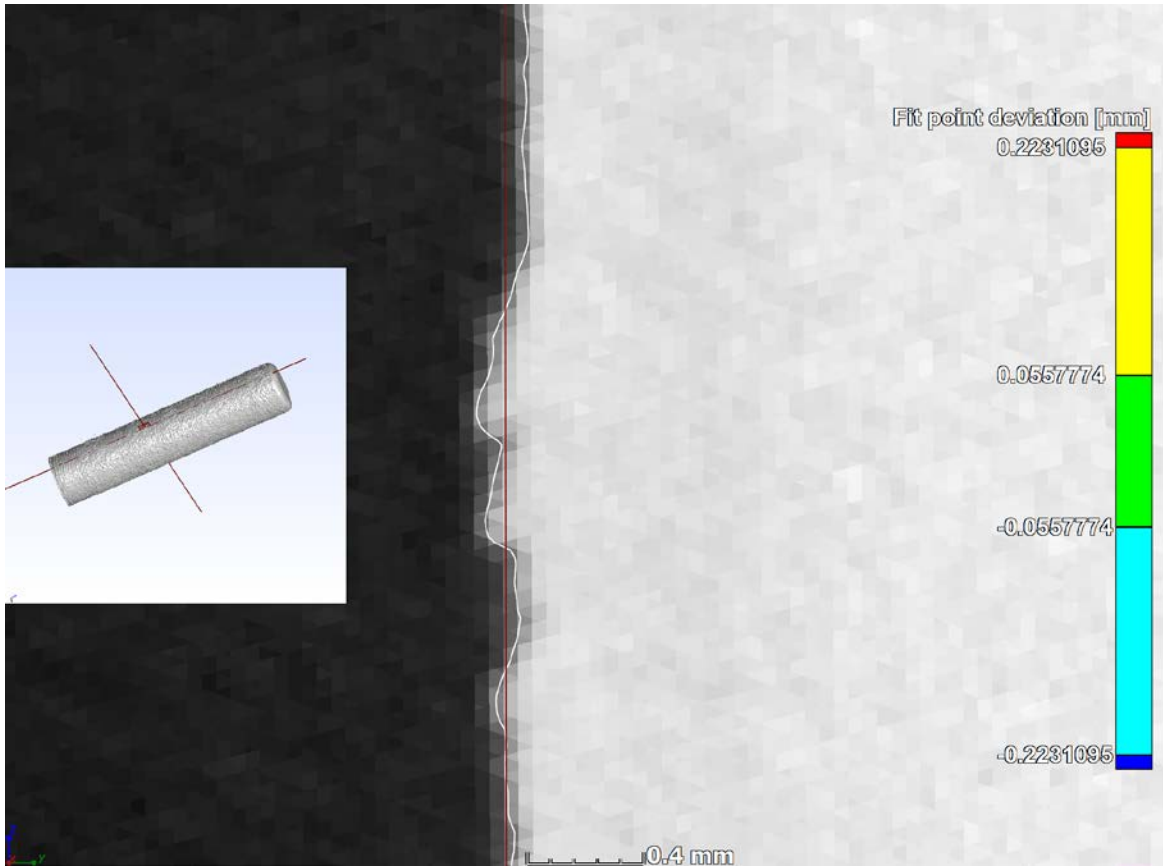
MicroCT can be used for surface roughness, but this requires excellent scan quality and good voxel size. It works well for very rough surfaces as for additive manufactured parts, and provides two things of interest (1) line profile quantitative roughness profiles and values, and (2) surface colour maps for deviations from geometric surfaces (ie. Planes, cylinders, etc). Here we demonstrate both for a cylinder built in Ti6Al4V.

## Results

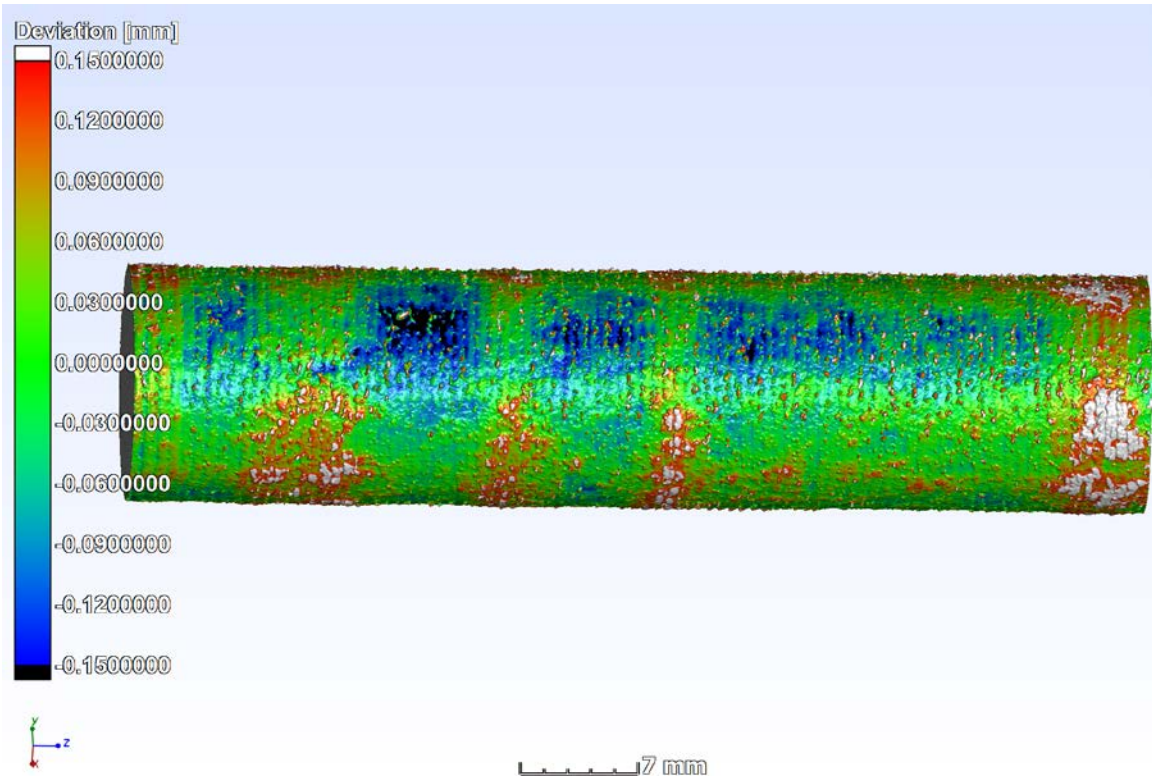
First, a line profile in this case of 60 mm length was taken and its roughness values calculated from one profile as shown.

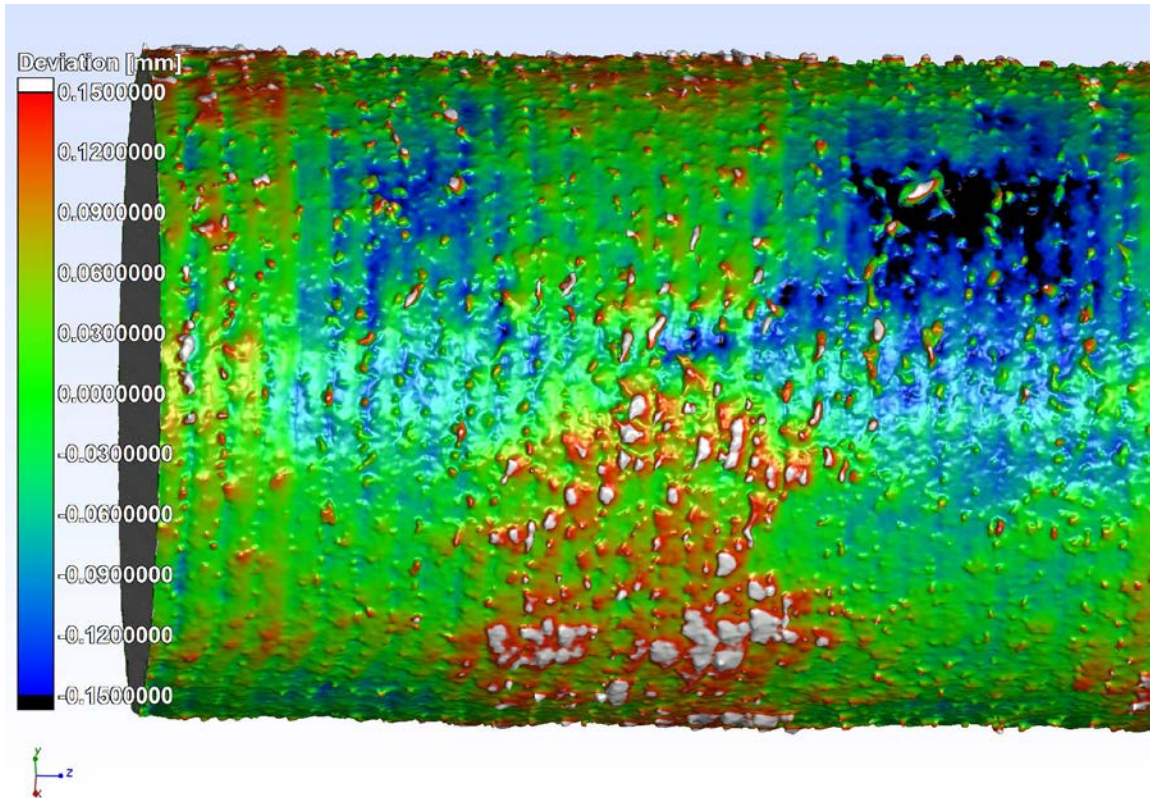
The mean roughness is 46 microns, and the voxel size is 35 microns. As you can see in the image, sub-voxel surface accuracy is possible (the white line is an interpolated surface).





**Figure 1:** Line profile surface roughness – in this case the  $R_z=0.178$  mm,  $R_a=0.046$  mm





**Figure 2:** Colour map of surface roughness (deviation from cylinder)

## **Limitations?**

Limitations on maximum X-ray penetration – typically samples should be smaller than 150 mm for light metals and 50 mm for steels and similar.

This is a grey area depending on part complexity and total material to be penetrated. Total material penetration limits for plastics, wood: 200 mm, titanium alloys and lighter metals: 40 mm; steel 10 mm. For surface roughness, only very rough surfaces can be measured > voxel size.

## **How to go about it**

This is a non-routine analysis and depends on the sample and voxel size, and geometry required. Anything from US\$ 300 – 1000 per sample. Full data can also be provided at additional cost with free viewer software. We use Volume Graphics VGStudioMax 3.3, and myVGL viewer.

Dr Anton du Plessis  
 CT Facility  
 PO Sauer building, Bosman Rd, Stellenbosch,7602  
 SOUTH AFRICA  
 Anton2@sun.ac.za  
 +27 (0)21 808 9389  
 www.sun.ac.za/ctscanner