

ICP-MS & XRF

ELEMENTAL ANALYSIS



In Earth Sciences

Visit our website at www.sun.ac.za/caf for more about our analytical facility as well as how to submit your samples.

Riana Rossouw - Manager | rrossouw@sun.ac.za

Mareli Grobbelaar – XRF analyst | mgrobbelaar@sun.ac.za



Rock & Mineral Geochemistry

XRF Major & LA ICP-MS traces

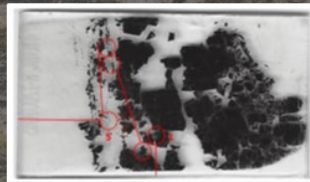
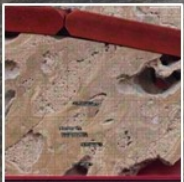
Analysis on rocks, ores, slurries or soil samples



In-situ Trace analysis

Analysis of trace elements in various materials:

- Ore & other minerals in thin or polished sections
- Mineral grain separates (zircon, garnet, ilmenite, etc)
- Fossils



U-Pb Isotope Measurement



- Instrument access for U-Pb analysis
- Facilities for mineral separation
- Preparation of mineral mounts
- Scanning Electron Microscopy for mineral imaging
- Lolite software for data processing

