



Using the SUNLearn Application

The SUNLearn mobile application was developed in 2017 (on Moodle version 3.8) to assist with the following, among many other things:

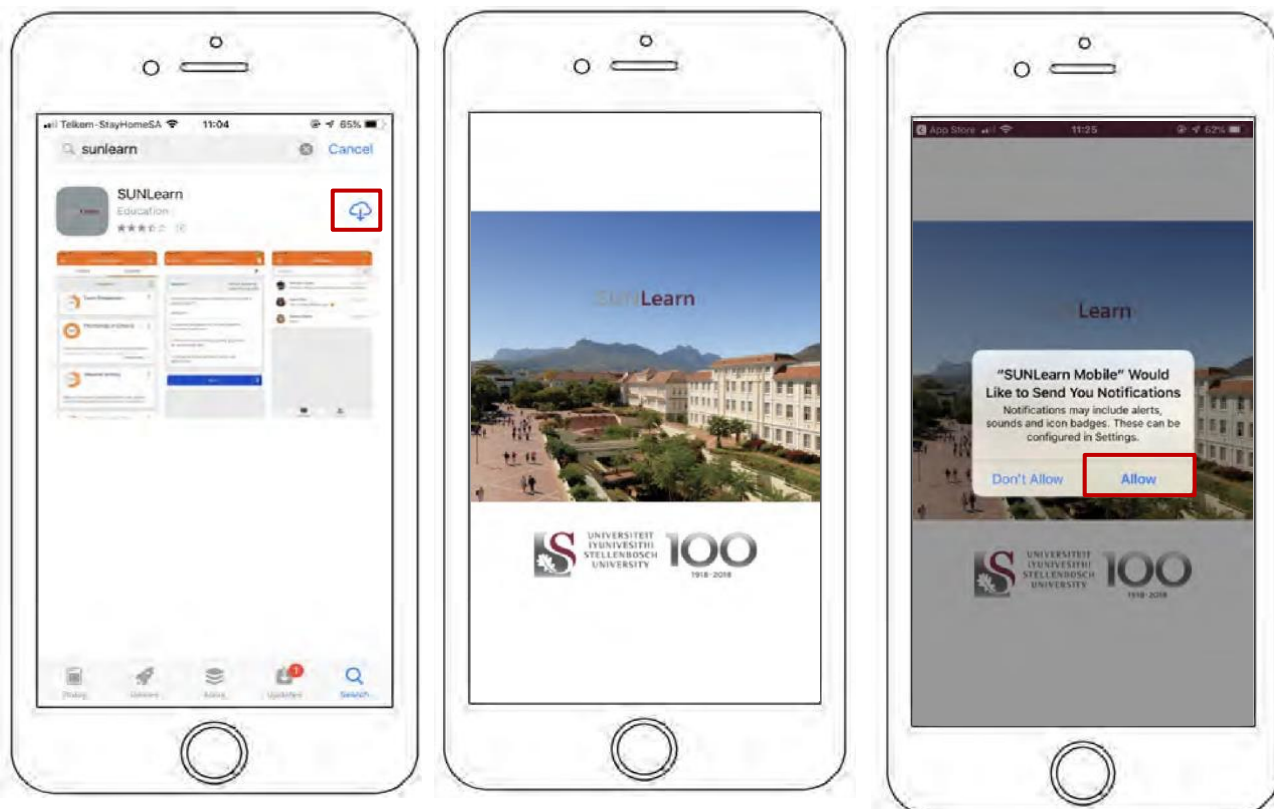
- browsing the content of your courses – even when offline;
- receiving instant notifications of messages and other events;
- quickly finding and contacting other people involved in your courses;
- uploading images, audio, video and other files from your mobile device; and
- viewing your grades.

However, as we have progressed to online learning, all these features can seem a bit overwhelming. Therefore we have compiled this document outlining the basics of the SUNLearn mobile application.

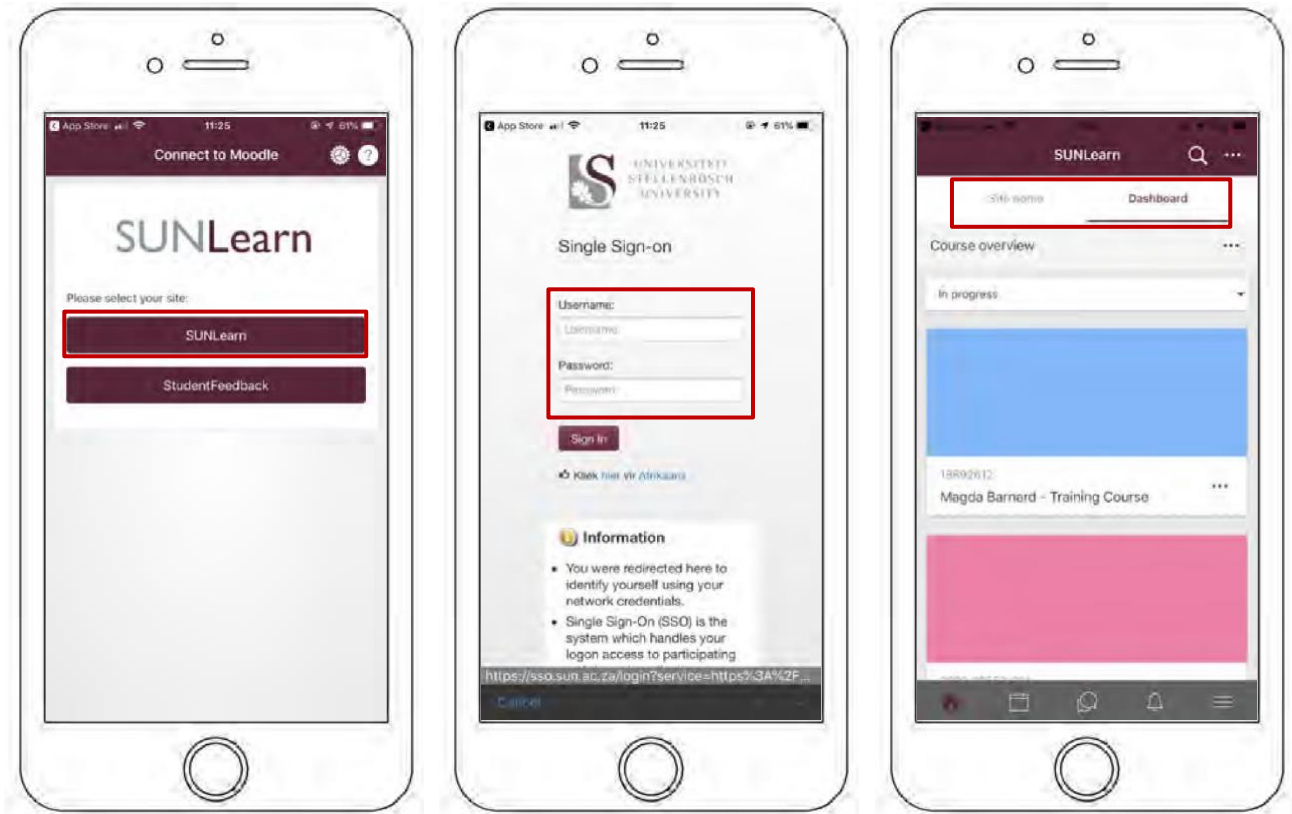
Logging into SUNLearn app

Click [here](#) for a quick video on how to download and set up SUNLearn on your cell.

1. After you have downloaded the SUNLearn application from Google Play (Android) or iTunes (iOS), you need to open the application and set it up.
2. To set up your device, the first thing you need to do is accept the 'Push notifications' message that will appear on your phone.



3. Once you have clicked “Accept” and set up ‘Push notifications’, you will be redirected to the SUNLearn mobile application log in page.
4. Select the SUNLearn button.
5. Log in, using your unique student number and password.
6. Once logged in, you are taken straight to the dashboard. You will find two tabs at the top, which you can navigate through. From the dashboard, you can quickly search and access your various courses.

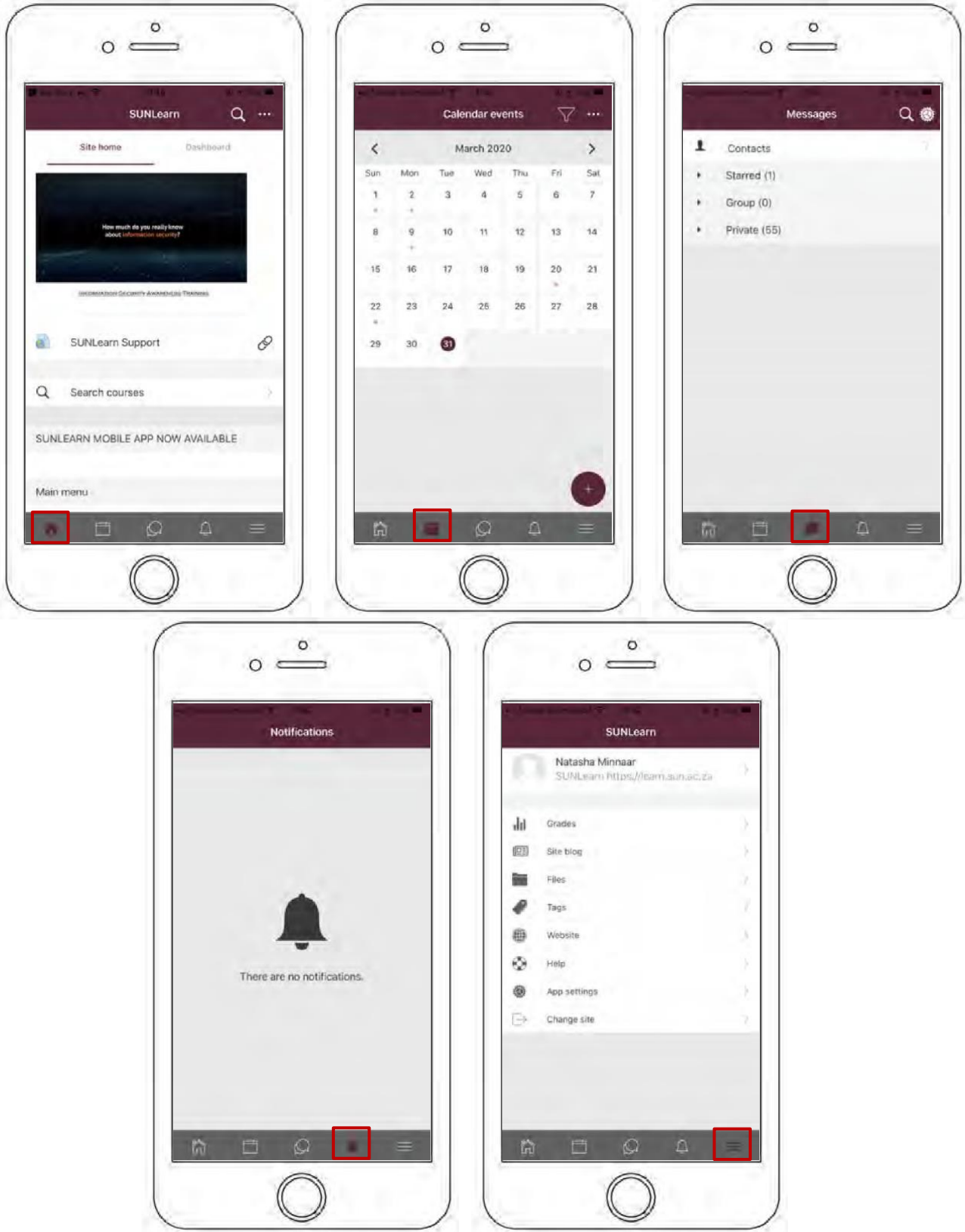


Navigating the SUNLearn app

7. Once you have logged in and navigated to the dashboard, the site home tab is where you can find the SUNLearn support link, watch a security training video and access site news, site forums and site resources.
8. At the bottom of your screen, on the left-hand side, you will see five icons:
 - House: This icon directs you back to the dashboard.
 - Calendar: This icon takes you to your calendar, which will show submission and various other University dates.
 - Speech bubbles: This icon takes you to your group and private messages sent directly on SUNLearn.
 - Bell: This icon will show any notifications for you from any courses that you are enrolled in.
 - Hamburger bar: This icon will take you to further setting options, such as:
 - your grades (for all your courses),
 - the site blog,

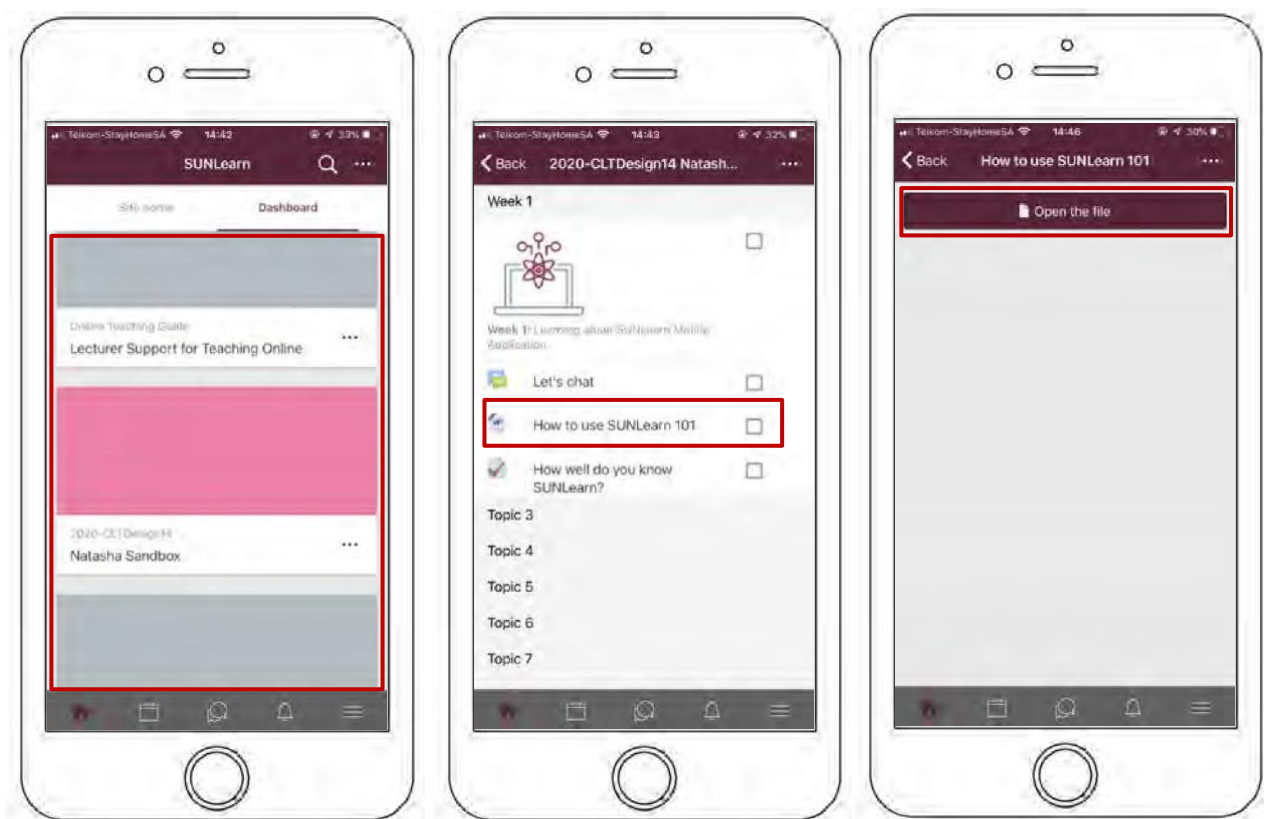
- file storage of any documents/resources you have uploaded,
- link to the online desktop version of SUNLearn, and
- the mobile application settings.

To change your general settings such as for language, text size or screen colour, click on the hamburger bar, then on “App settings”, and select “General”.

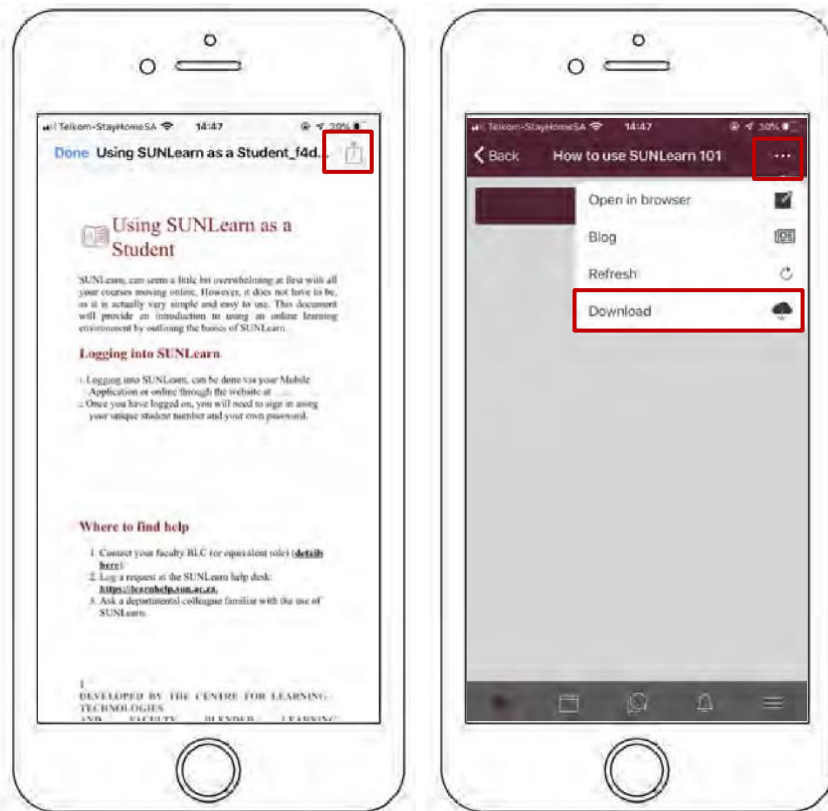


How to download course content and use it offline

1. From the dashboard, select the course for which you would like to download content.
2. Once you have selected your course, you can navigate to the course page and see the various modules and the structures set out by your lecturer.
3. You can select a week and go there to view the content.
4. On your screen, you will notice little icons representing the content, which could be documents, videos, recordings or various other formats. Click on the little cloud icon to download the specific content and view it on your phone. This will allow you to go through the content at any time, not only via the SUNLearn application. [Click here](#) for a video on how this works.



5. Another way you can download a file is by selecting the course and clicking on the content you want to download. Then you can either open the file and save it to your phone directly, or you can click on the three dots and then select the download icon.
Note: certain mobile providers (e.g. Vodacom, Telkom and MTN) have provided zero rating data, which means you do not need to have data on your phone to access SUNLearn or download items from it.



Where to find help

1. Log a request at the SUNLearn helpdesk: <https://learnhelp.sun.ac.za>.
2. Ask a friend who is familiar with the use of SUNLearn.
3. Ask your lecturer or tutor.